



Multi-Patch QUICK SET-UP GUIDE

The Healing Power of
TWO₂ in a Flexible Form

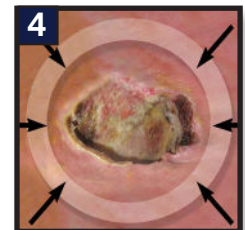
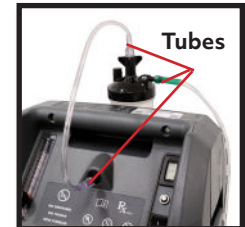
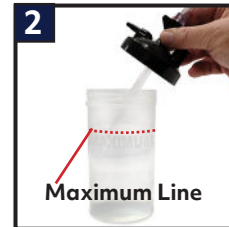


PREPARATION AND SET-UP **No Smoking and No open flames!**

After your AOTI Representative has set up the equipment needed for use with this therapy.

WHAT YOU NEED: 1 PATCH

- 1 Ensure the Concentrator is plugged into power source.
- 2 Fill the humidifier with distilled water up to the line between each use. Only use distilled water. Place the humidifier in position and check all connections are secure (or "have a good seal").
- 3 If any ointments or dressings are not gas permeable (such as Santyl/Silvadene; Collagenase) it will need to be removed and the area cleaned as ordered by the healthcare provider (performed by caregiver). A new dressing or ointment may need to be applied after the oxygen therapy has been completed.
- 4 Where the Multi-Patch will be placed directly on the skin, for protection, use skin prep wipes and allow to dry. The Multi-Patch can be placed over gas-permeable dressings.
- 5 Open a new multi-patch. In order for wound(s) to fit comfortably in the aperture/opening, remove the required number of rings, or cut adhesive ring area to required shape. The wound does **NOT** need to be centered. Remove the paper backing from the remaining adhesive rings and place the Multi-Patch over the desired treatment area.
- 6 Connect oxygen tubing to the outlet port of the humidifier bottle.



STARTING THERAPY

- 7 Connect the fittings to the patch and listen for a **CLICK** (Save the extra tubing in a safe location). Be sure that the fittings are not under any body part to prevent injury to the skin.

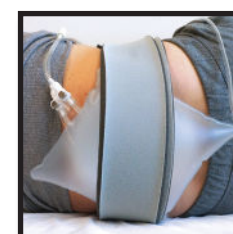


- 8 Turn the Concentrator on and the flow knob up on the concentrator until the Multi-Patch gently pillows (usually between 3-4 liters per minute) and does not pull away from the skin. Where the Multi-Patch is placed over dressings, there will be more leakage and a higher flow will be needed. Do not exceed 5 LPM or 10 LPM depending on the size of concentrator being used.



- 9 Be sure the patch is adhering to the skin. If the patch is inflating/pillowing, then the treatment is working.

The foam belt can be used to help hold the Multi-Patch securely in place and to provide better adhesion over dressings.

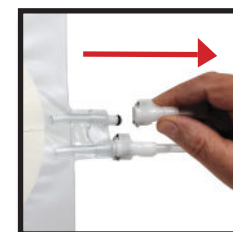


FINISHING THERAPY

TIMED THERAPY

- 10 After 60-90 minutes of therapy, turn the oxygen concentrator off and disconnect the connectors from the patch. Slowly remove the patch so as not to tear the skin. Discard the used patch appropriately.

If the dressing was removed prior to therapy, have the caregiver apply a new dressing as ordered by the healthcare provider.



Save the tubing for the next usage, "**DO NOT** throw away."



REMINDER!

The Multi-Patch is single-use only. Discard after use. **DO NOT** reuse, reprocess or disinfect.

For a comprehensive manual and important safety information, refer to the INSTRUCTIONS FOR USE which is provided with the TWO₂ Multi-Patch Therapy System. For further product information, contact your AOTI Representative. For medical questions, contact your doctor, nurse or caregiver. All trademarks designated herein are property of AOTI.

AOTI Contact: _____

Phone: _____ Email: _____



3512 Seagate Way, Suite 100
Oceanside, CA 92056, USA
P: 1-760-431-4700 • F: 1-760-683-3063

**For More Information
Visit TWO₂ Multi-Patch**



MB1100-A



**NEVER SMOKE OR USE
A NAKED FLAME IN THE
PRESENCE OF OXYGEN.**